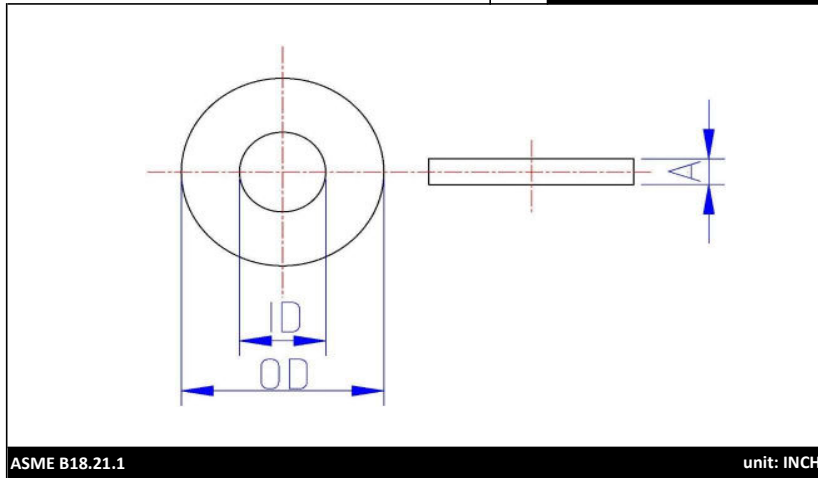




Brand	Root
	PWZ...



BOLT SIZE	ID		OD		A		
	Basic	INSIDE DIAM.	Basic	OUTSIDE DIAM.	THICKNESS		
1/8 (#8)	3/16	Min	0.183	7/16	Min	0.433	0.036
		Max	0.196		Max	0.453	0.065
3/16	1/4	Min	0.245	9/16	Min	0.557	0.036
		Max	0.265		Max	0.577	0.065
1/4	5/16	Min	0.307	3/4	Min	0.727	0.051
		Max	0.327		Max	0.749	0.080
5/16	3/8	Min	0.370	7/8	Min	0.868	0.064
		Max	0.390		Max	0.905	0.104
3/8	7/16	Min	0.433	1	Min	0.993	0.064
		Max	0.453		Max	1.030	0.104
7/16	1/2	Min	0.495	1-1/4	Min	1.243	0.064
		Max	0.515		Max	1.280	0.104
1/2	9/16	Min	0.557	1-3/8	Min	1.368	0.086
		Max	0.577		Max	1.405	0.132
9/16	5/8	Min	0.620	1-1/2	Min	1.462	0.086
		Max	0.640		Max	1.500	0.132
5/8	11/16	Min	0.681	1-3/4	Min	1.742	0.108
		Max	0.718		Max	1.780	0.160
3/4	13/16	Min	0.805	2	Min	1.993	0.122
		Max	0.842		Max	2.030	0.177
7/8	15/16	Min	0.931	2-1/4	Min	2.243	0.136
		Max	0.968		Max	2.280	0.192
1	1-1/16	Min	1.055	2-1/2	Min	2.493	0.136
		Max	1.092		Max	2.530	0.192
1-1/8	1-1/4	Min	1.243	2-3/4	Min	2.743	0.136
		Max	1.280		Max	2.780	0.192
1-3/8	1-1/2	Min	1.490	3-1/4	Min	3.240	0.153
		Max	1.545		Max	3.295	0.213

"U.S.S." FLAT WASHER, ZINC PLATED
 Washer follow the IFI Type A - Wide

Root= Plate Washer Zinc

Bulk Label Description:

English: "USS" FLAT WASHER, ZINC
 French: RONDELLE PLATE "USS", ZINC
 Spanish: ARANDELA PLANA "USS", ZINC

Date: 26 janvier 2016

Done By: *P.B*