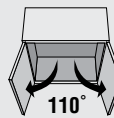


CLIP TOP BLUMOTION HINGE

- Hinge with larger overlay capacity for thick cabinet sides
- CLIP top BLUMOTION with integrated BLUMOTION (with deactivation option)
- CLIP top with or without closing mechanism (spring)
- All metal hinge, nickel plated
- 110° opening angle
- 3-dimensional front adjustment
- Convenient spiral-tech depth adjustment
- Tool-free door to cabinet assembly and removal
- With INSERTA tool-free hinge to door assembly

Planning

Hinge dimensions and gap calculation based on factory setting (mounting plate spacing = 0 mm). Hinge and door protrusion at full opening angle.



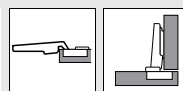
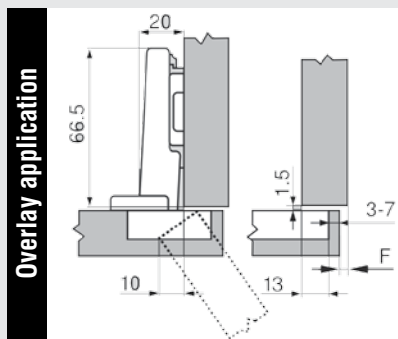
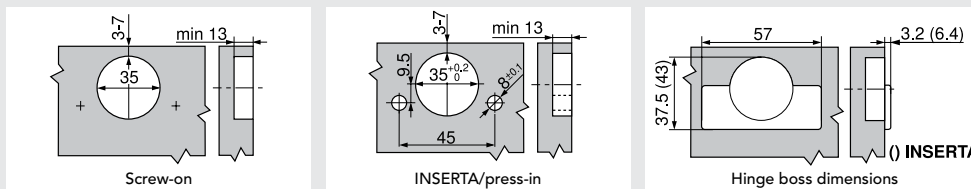
Sold by unit

| PRODUCT | FIXING TYPE | QTY/BOX |
|-------------------|----------------------------|---------|
| 73B358180 | Dowels | 250 |
| 73B359180 | Inserta | |
| 73B358E180 | Pre-mounted Expando dowels | |
| 73B355180 | Screw-on | |

New!

Minimum gap (F) for fronts with a front radius (R = 1 mm) based on the factory setting

| Drilling distance TB | Front thickness FS | | | | | | | | | | | In these cases a trial is recommended |
|---------------------------------------|--------------------|-------|-------|-------|-------|-------|-------|-------|-------|-------|----|---------------------------------------|
| | 16 | 18 | 19 | 20 | 21 | 22 | 23 | 24 | 25 | 26 | 28 | |
| 3 | 0.5 | 0.8 | 1.0 | 1.2 | 1.5 | 1.8 | 2.2 | 2.7 | 3.5 | 4.3 | | |
| 4 | 0.5 | 0.8 | 1.0 | 1.2 | 1.4 | 1.7 | 2.0 | 2.5 | 3.1 | 3.8 | | |
| 5 | 0.5 | 0.8 | 0.9 | 1.2 | 1.4 | 1.7 | 2.0 | 2.4 | 2.9 | 3.4 | | |
| 6 | 0.5 | 0.8 | 0.9 | 1.2 | 1.3 | 1.6 | 1.9 | 2.3 | 2.7 | 3.2 | | |
| 7 | 0.5 | 0.8 | 0.9 | 1.1 | 1.3 | 1.6 | 1.9 | 2.2 | 2.6 | 3.0 | | |
| Additional for + 2 mm side adjustment | | | | | | | | | | | | |
| | + 0.2 | + 0.4 | + 0.4 | + 0.5 | + 0.5 | + 0.5 | + 0.5 | + 0.5 | + 0.5 | + 0.5 | | |



| Drilling distance | Front overlay | | | | | | | | | | | | | | | | |
|-------------------|----------------|---|---|---|----|----|----|----|----|----|----|----|----|----|----|---|--|
| | - | 7 | 8 | 9 | 10 | 11 | 12 | 13 | 14 | 15 | 16 | 17 | 18 | 19 | 20 | | |
| 0 | | | | | | | | | | | | 3 | 4 | 5 | 6 | 7 | |
| 3 | | | | | | | | 3 | 4 | 5 | 6 | 7 | | | | | |
| 6 | | | | | 3 | 4 | 5 | 6 | 7 | | | | | | | | |
| 9 | | 3 | 4 | 5 | 6 | 7 | | | | | | | | | | | |
| ↑ | Mounting plate | | | | | | | | | | | | | | | | |

- 1** SCREWS AND FASTENERS
- 2** FURNITURE EQUIPMENT
- 3** HINGES
- 4** SLIDES
- 5** CASTERS AND LEGS
- 6** KITCHEN SOLUTIONS
- 7** CLOSET SOLUTIONS
- 8** LIGHTING SOLUTIONS
- 9** SINKS AND FAUCETS
- 10** OFFICE
- 11** SLIDING DOORS
- 12** GLASS HARDWARE
- 13** PANELS AND SURFACES
- 14** EDGE-BANDING
- 15** CABINET DOORS AND DRAWERS
- 16** CORBELS AND FLOOR REGISTERS
- 17** GLUES, SILICONES, CAULK AND INSULATING
- 18** TOOLS AND SECURITY
- 19** FINISHING PRODUCTS AND SHOP SUPPLIES
- 20** COMMERCIAL DISPLAY HARDWARE
- 21** MOLDING, RAILING AND BATHROOM HARDWARE

CLIP TOP BLUMOTION 110° HINGES

Sold by unit

| PRODUCT | FINISH | FIXING TYPE | OVERLAY | QTY/BOX |
|-----------|------------|-------------|--------------|---------|
| 71B355181 | Black onyx | Screw-on | Full overlay | 250 |
| 71B359181 | | | Half overlay | |
| 71B369181 | | Inserta | Half overlay | |
| 71B379181 | | | Inset | |



CLIP TOP BLUMOTION 95° HINGES FOR THICK DOOR

Soft-close mechanism

Sold by unit

| PRODUCT | FINISH | FIXING TYPE | OVERLAY | QTY/BOX |
|-----------|------------|-------------|--------------|---------|
| 71B959181 | Black onyx | Inserta | Full overlay | 250 |
| 71B969181 | | | Half overlay | 50 |
| 71B979181 | | | Inset | |



HORIZONTAL CAM MOUNTING PLATES (SCREW-ON) - 0MM

Sold by unit

| PRODUCT | FINISH | FIXING TYPE | QTY/BOX |
|------------|------------|-------------|---------|
| 175H310181 | Black onyx | Screw-on | 500 |
| 174H710181 | | Expando | |



175H310181

HINGE COVER CAPS

Can also be used for angled, mini and glass door hinge

Sold by unit

| REF. | PRODUCT | FINISH | DESCRIPTION | QTY/BOX |
|------|------------|------------|--|---------|
| A | 701553181 | Black onyx | Straight-arm and cranked-arm hinge cover cap | 1000 |
| | 701503181 | Black onyx | Standard straight arm hinge cover cap | |
| B | 701663181 | Black onyx | Straight-arm and cranked-arm hinge cover cap | |
| C | 70T3504181 | Black onyx | Clip top BLUMOTION cover cap | |



A



B



C

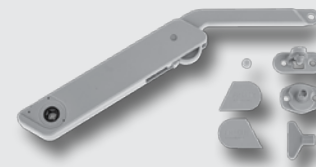
FREELIGHT OPENING MECHANISM

The new FREELight is a versatile lifter that can be used together with widely available flap or door hinges. FREELight is capable of lifting and lowering front panels on wall units and other high units. The front panels can weigh between 2 to 23 lb (0.9 to 10.5 kg). They can measure between 10 13/16" to 23 5/8" (275 to 600 mm) when used with a 90° angle.

- Simple, tried, and tested technology
- High-quality appearance
- Simple assembly
- Can be installed on right or left side

Application: Ideal for kitchens and living rooms

Included: 1 FREELight fitting, 1 right cover cap, 1 left cover cap, 1 front connector (for wood or euro screws), 1 carcass connector (for wood or euro screws), 1 adjustment key



| PRODUCT | FINISH | LOAD CAPACITY | QTY/BOX |
|-----------|--------|------------------------------------|---------|
| 272032100 | Gray | 1.54 to 6.17 lb (0.7 to 2.8 kg) | 1 |
| 27203230 | White | | |
| 272033100 | Gray | 2.65 to 9.48 lb (1.2 to 4.3 kg) | |
| 27203330 | White | | |
| 272035100 | Gray | 4.85 to 15.7 lb (2.2 to 7.1 kg) | |
| 27203530 | White | | |

PUSH TO OPEN MAGNETIC LATCH PISTON WITH PLATE FOR FREELIGHT

- Drilling depth: 40 mm
- Drilling diameter: 10 mm

| PRODUCT | DRILLING DEPTH | DRILLING Ø | QTY/BOX |
|---------|-----------------|--------------|---------|
| 272038 | 1 9/16" (40 mm) | 3/8" (10 mm) | 10 |



MAGNETIC LATCH ADAPTER FOR FREELIGHT

| PRODUCT | QTY/BOX |
|---------|---------|
| 272040 | 10 |

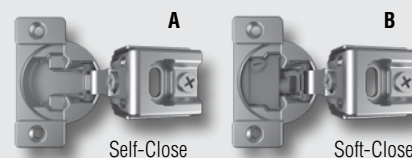


RFF SERIES - COMPACT FACE FRAME HINGES

The RFF series is available as a self-close mechanism and as a patented progressive soft-closing mechanism technology to eliminate doors from slamming.

- Fast assembly
- Wrap-a-round fixation
- 2 cams
- 6-way adjustments
- KCMA approved

| REF. | PRODUCT | FIXING TYPE | OVERLAY | CLOSING | QTY/BOX |
|------|-------------|-------------|----------------|------------|---------|
| A | RFF30120050 | Screw-On | 1/2" (13 mm) | Self-Close | 300 |
| | RFF30120058 | Dowels | | | |
| | RFF31140050 | Screw-On | 1 1/4" (32 mm) | | |
| | RFF31140058 | Dowels | | | |
| B | RFF30120040 | Screw-On | 1/2" (13 mm) | Soft-Close | 300 |
| | RFF30120048 | Dowels | | | |
| | RFF31140040 | Screw-On | 1 1/4" (32 mm) | | |
| | RFF31140048 | Dowels | | | |



KIMANA HINGES FOR LIFT-UP AND DOWNWARD DOORS

Kimana hinges are designed to open and close flap and drop-down doors.

With a unique, exclusive movement design, it opens vertical cabinet doors even when the cabinet bottom rests on another panel or the cabinet top is topped with a decorative or lighting panel.

- The minimum panel thickness for the installation of a Kimana hinge is 6/8" (18 mm)
- For installation on panels of 5/8" (16 mm), use the adapter #11116180 or 11116190
- Minimal dimensions (Ø 26 mm boring for both the door and the bottom) as well as a minimalistic and elegant design contribute to making Kimana a functional hinge that is unique in its class
- Perpendicular mounting screws allows Kimana to be precisely positioned and makes it perfect for aluminum profiles.
- Kimana can easily be adjusted through the screws (PZ2) which are hidden underneath the cover. Different combinations of door and cabinet thicknesses can be created by adjusting Kimana (for thicknesses of 6/8" (18 mm), 3/4" (19 mm), and 25/32" (20 mm) or by placing adapters (for panel thicknesses of 16 mm) under the hinge clip to ensure perfect movement and alignment of the door

Included:

- 4 perpendicular mounting screws
- Adapter for 11/16" and 13/16" (18 mm and 21 mm)
- Instructions

Sold by unit

Specifications:

- Depth adjustment: 0 to 3/32" (0 to 2 mm)
- Lateral adjustment: 0 to 1/32" (0 to 1 mm)
- Vertical adjustment: 0 to 3/32" (0 to 2 mm)
- Locking system
- Standard drilling diameter: 1 1/32" (26 mm)
- Minimal depth: 19/32" (15 mm)
- The Kimana hinge installs without adapter on a door and cabinet panel that has a thickness of 6/8" to 25/32" (18 mm to 20 mm)



| PRODUCT | FINISH | PANEL THICKNESS | DRILLING Ø | QTY/BOX |
|-----------------|----------|-----------------|-----------------|---------|
| 11125090 | Black | 6/8" (18 mm) | 1 1/32" (26 mm) | 150 |
| 11125905 | Graphite | | | |
| 11125180 | Nickel | | | |



New!

ADAPTERS FOR 5/8" (16 MM) PANEL - KIMANA HINGE

Sold by unit

| PRODUCT | FINISH | PANEL THICKNESS | QTY/BOX |
|-----------------|----------|-----------------|---------|
| 11116190 | Black | 5/8" (16 mm) | 100 |
| 11116905 | Graphite | | |
| 11116180 | Nickel | | |



New!

Suggested product(s):

| PRODUCT | DESCRIPTION |
|-----------------|---|
| 11125XXX | Kimana hinge for lift-up and downward doors |